



Public Consultation Centre No. 1 Summary Report

County of Lambton County Road 22 and County Road 8 Intersection Design

April 21, 2025

Submitted by:
BT Engineering Inc.
509 Talbot Street
London, ON N6A 2S5
519-672-2222



Table of Contents

1.0 INTRODUCTION..... 1
 1.1 Project Limits 1
2.0 PUBLIC AND AGENCY CONSULTATION 2
 2.1 Public Contacts 2
 2.2 Agency and Stakeholder Contacts 2
 2.3 Indigenous Peoples Contacts 2
 2.4 Advertisements 2
 2.5 Lambton County Website 4
3.0 PCC COMMENTS 5
4.0 CONCLUSIONS 6

List of Figures

Figure 1: Project Limits 1
Figure 2: Sample Facebook Social Media Post..... 3
Figure 3: Sample X Social Media Post..... 3

List of Tables

Table 1: Comments from PCC No. 1..... 5

List of Appendices

Appendix A Notice of PCC No. 1
Appendix B PCC Exhibits
Appendix C PCC Comment Sheets

1.0 INTRODUCTION

The County of Lambton retained BT Engineering Inc. to complete the Detail Design of improvements to the County Road 22 (London Line) and County Road 8 (Forest Road) intersection located on the municipal boundary between the Town of Plympton-Wyoming and the St. Clair Township, Ontario.

An intersection control study at County Road 22 and County Road 8 was prepared to assess existing roadway geometry, traffic volumes, collision history, traffic operations and safety performance of the existing two-way stop control intersection. Possible intersection control treatments included all-way stop control, signalization, and roundabouts. The evaluation of alternatives included a comparison of projected traffic capacity, safety performance, and construction costs. A roundabout was identified as the preferred intersection control.

The first Public Consultation Centre (PCC) for this project was held on Monday, November 25, 2024, from 5:00 to 8:00 pm at the Lambton County Administration Building in Wyoming, Ontario. This report provides an overview of the comments received during the PCC No. 1 review period. The PCC No. 1 exhibits included an overview of the need and justification of the project, the existing conditions, proposed detail design, effects and mitigation, and next steps.

All members of the public and interest groups were encouraged to provide a written response to any issues or concerns.

1.1 Project Limits

The intersection is located on the municipal boundary between the Town of Plympton-Wyoming and the Township of Warwick, Ontario, see **Figure 1** for the Project Limits.

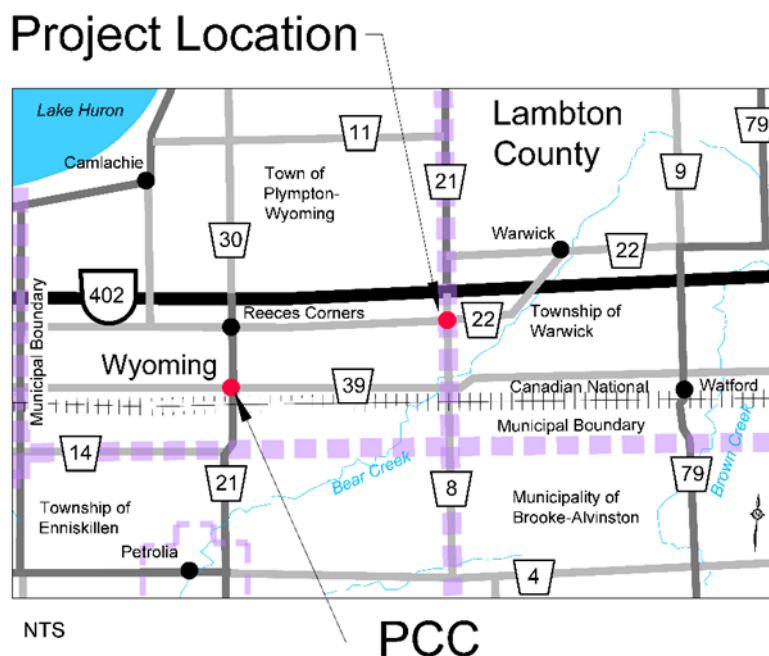


Figure 1: Project Limits

2.0 PUBLIC AND AGENCY CONSULTATION

One of the key aspects of the project is to provide the public, interested parties, affected agencies and municipalities with the opportunity for input. To meet this objective a public and agency notification program was undertaken. The program includes a number of communication mechanisms, discussed in the following sections.

2.1 Public Contacts

Notices were mailed to adjacent property owners and business owners along County Road 22 and County Road 8 within the Project Limits. The notice was to advertise and invite members of the public to attend the PCC. In total, 22 individual letters were distributed to adjacent property owners.

2.2 Agency and Stakeholder Contacts

The following ministries, agencies, utilities and stakeholders were invited to attend PCC No. 1:

- Bell Canada
- Cogeco Connexion
- Brooke Telecom
- Enbridge Inc.
- Hydro One Networks
- St. Clair Region Conservation Authority
- Township of Warwick
- Town of Plympton-Wyoming
- Township of Warwick

2.3 Indigenous Peoples Contacts

Individual letters were sent to the following Indigenous Peoples, to notify them of the PCC No.1:

- Caldwell First Nation
- Chippewas of the Thames First Nation
- Chippewas of Kettle and Stony Point First Nation
- Métis Nation of Ontario
- Oneida Nation of the Thames
- Walpole Island First Nation, Bkejwanong Territory
- Munsee-Delaware Nation
- Delaware Nation
- MNO Windsor-Essex Métis Council

The contact letter also included an offer to meet in person at a time and location of the Indigenous communities' choosing.

2.4 Advertisements

The Notice of PCC No. 1 was advertised on Facebook and X (formerly known as Twitter) on November 13, 2024, with the County posting reminders regularly till the date the PCC was held. The Notice of PCC No.1 is found in **Appendix A** and screenshots of the social media posts are shown in **Figure 2** and **Figure 3**.



Figure 2: Sample Facebook Social Media Post



Figure 3: Sample X Social Media Post

2.5 Lambton County Website

The Notice of PCC No. 1 was posted on the County of Lambton website inviting interested persons to attend the PCC. The project website link is:

<https://calendar.lambtononline.ca/default/Detail/2024-11-25-1700-Public-Consultation-Centre-County-Road-8-and-22-Ro>

3.0 PCC COMMENTS

PCC No. 1 exhibits were provided around the perimeter of the room and made available post event online for public/agencies to view at their leisure. A presentation was provided at the PCC by Mr. Steve Taylor, the Consultant Project Manager, to review the project. The presentation was followed by a question-and-answer period. The PCC No. 1 exhibits are provided in **Appendix B**.

Twenty-one (21) people registered at PCC No. 1. Comments were received from those that participated in the PCC or who reviewed the exhibits online. Ten (10) comment sheets were submitted at PCC No. 1 and during the subsequent two-week comment period. Copies of the written comments, excluding personal information, are provided in **Appendix C**.

3.1 Summary of Comments

The comments submitted by members of the public are summarized in **Table 1**.

Table 1: Comments from PCC No. 1		
Comment	Number of Respondents	Comment Sheet No.
Concern for extended closure/detour routes/ access during construction.	4	1, 2, 8
Concern for access through the intersection for farmers with farm equipment needing to access their farms on both sides of the roundabout.	1	2, 6
Do not support proposed roundabout.	1	3, 9
Would like to keep the parking lot.	1	4
Remove old concrete road alignment.	2	5, 8
Concern for the memorial at the intersection and if a new one will be installed if it needs to move.	1	7, 10
Support proposed roundabout.	1	10

4.0 CONCLUSIONS

The primary conclusions from the meeting include:

- Most attendees supported the roundabout.
- Concern for access during construction and for farmers needing to move farm equipment through the intersection to access farmland on both sides.
- The existing memorial should be moved or reinstalled after roundabout construction.

Appendix A

Notice of PCC No. 1



**Notice of Public Consultation Centre
County of Lambton
County Road 22 (London Line) and County Road 8 (Forest Road)
Roundabout Intersection**

INTRODUCTION

The County of Lambton has retained BT Engineering Inc. to complete the design for improvements to the County Road 22 (London Line) and County Road 8 (Forest Road) intersection located on the municipal boundary of the Town of Plympton-Wyoming and the Township of Warwick, Ontario. The design includes a roundabout to improve the operation and safety of the existing intersection.

PUBLIC CONSULTATION

The public consultation process ensures that anyone with interest in the project has the opportunity to provide input. An in-person Public Consultation Centre (PCC) is being held as follows:

Date: Monday, November 25, 2024
Time: 5:00 pm to 8:00 pm, presentation at 7:00 pm
Location: Lambton County Administration Building
789 Broadway Street
Wyoming, Ontario N0N 1T0

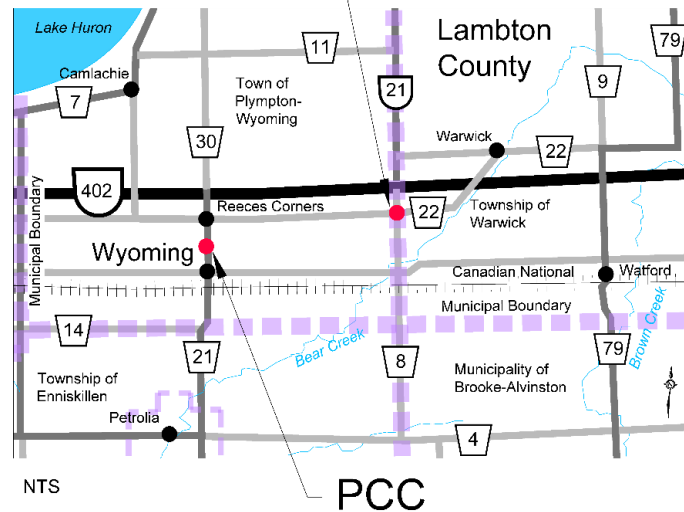
All information will be collected in accordance with the *Municipal Freedom of Information and Protection of Privacy Act* (2009). Personal information you submit will not become part of the public record that is available to the general public and remain confidential. The public will be advised of future communication opportunities by the County's website in addition to public notices in newspapers.

For more information or if you wish to be placed on the project's mailing or emailing contact list, contact either:

Steve Taylor, P.Eng., M.Eng.
Consultant Project Manager
BT Engineering Inc.
509 Talbot Street
London, ON N6A 2S5
Email: stevenj.taylor@bteng.ca
Phone: 519-672-2222
Toll Free: 1-866-218-1001

Matt Deline, P.Eng.
Manager, Public Works
County of Lambton
789 Broadway Street, Box 3000
Wyoming, ON N0N 1T0
Email: Matt.Deline@county-lambton.on.ca
Phone: 519-845-0809 ext. 5370

Project Location



Appendix B

PCC Exhibits

Welcome!
County of Lambton
Intersection Improvements at County Road 22
and
County Road 8 Detail Design
Public Consultation Centre



November 25, 2024

Welcome!

County of Lambton

Intersection Improvements at County Road 22 and County Road 8 Detail Design Public Consultation Centre



Should you have any questions regarding the project, please contact the County or Consultant Project Managers listed below.

Several background reports are available to supplement the information shown in the exhibits. Should you have any questions regarding the materials or any other aspect of the study, please contact the following by December 6, 2024.

Steve Taylor
Consultant Project Manager
Email: stevenj.taylor@bteng.ca
Phone: 519-672-2222
Toll Free: 1-866-218-1001

Matt Deline, P.Eng.
Manager, Public Works
County of Lambton
789 Broadway Street, Box 3000
Wyoming, ON N0N 1T0
Email: Matt.Deline@county-lambton.on.ca
Phone: 519-845-0809 ext. 5370

There is an opportunity at any time for interested persons to provide written input. Any comments received will be collected under the *Municipal Freedom of Information and Protection of Privacy Act* (2009) and, with the exception of personal information, will become part of the public record.

Purpose of Public Consultation Centre (PCC)

The purpose of this event is to engage the public/stakeholders on their perspectives and interests in the project. The project will proactively involve the public, stakeholders and Indigenous Peoples.

The public consultation process ensures that anyone with interest in the project can provide input.

The following exhibits will display:

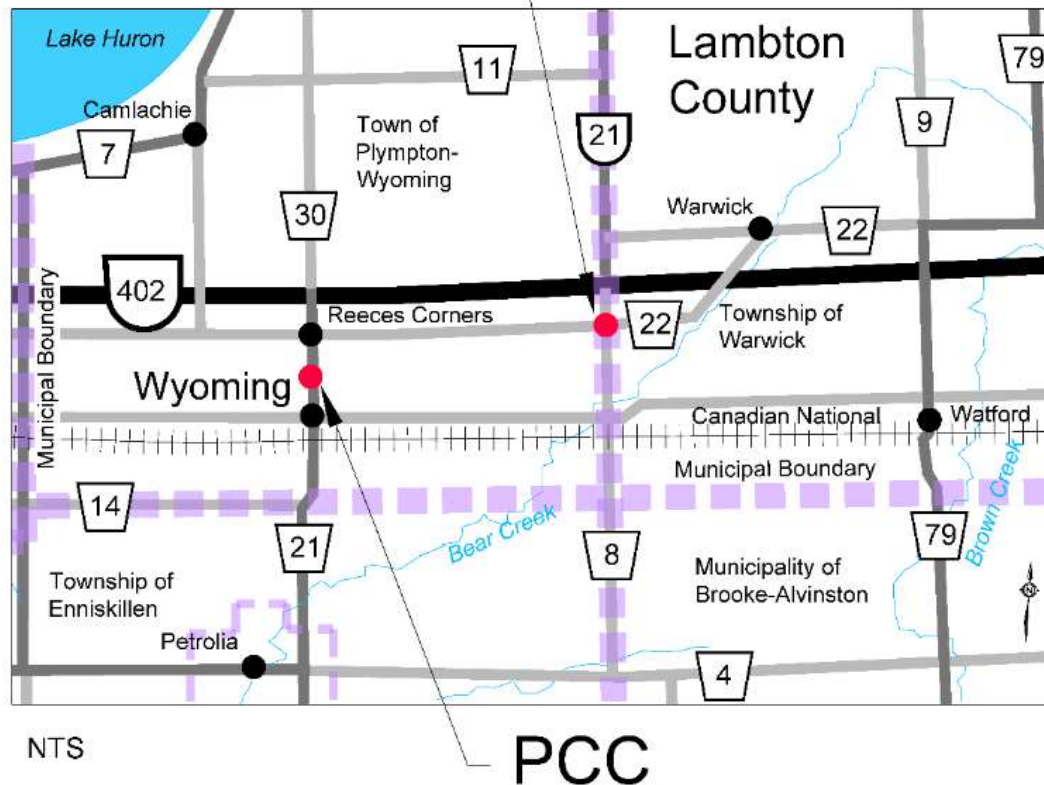
- The project introduction and Need and Opportunity for the Project.
- A summary of work completed to date.
- A description of the existing conditions in the area.
- Next Steps.

Introduction

The County of Lambton has retained BT Engineering Inc. to complete the Detail Design for improvements to the County Road 22 (London Line) and County Road 8 (Forest Road) intersection located on the municipal boundary between the Town of Plympton-Wyoming and the Township of Warwick, Ontario. The design includes a roundabout to improve the operation and safety of the existing intersection.

The project location for this intersection is shown below.

Project Location



Need and Justification

An intersection control study at County Road 22 and County Road 8 of the existing roadway geometry, traffic volumes, and collision history was prepared to assess traffic operations and safety performance of the existing two-way stop control intersection. Possible intersection control treatments (i.e. ALL-WAY STOP control, signalization, & roundabout), their projected traffic capacity, safety performance, and construction costs were compared as part of the study.

A single lane roundabout was recommended as the preferred alternative at the intersection of County Road 22 and County Road 8.

Roundabouts offer several benefits over more conventional intersection control including the following:

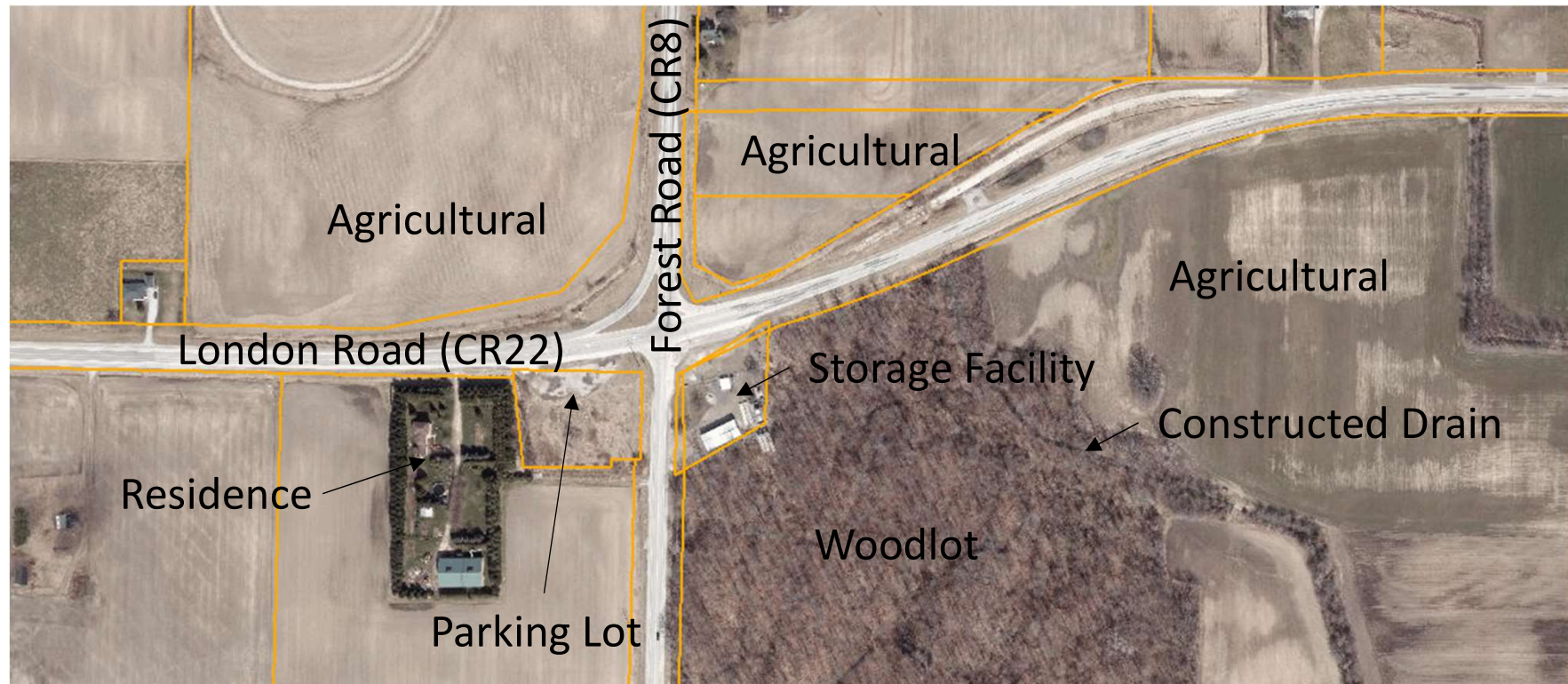
- Reduced number of conflict points;
- Reduced collision frequency and severity;
- Reduced travel speeds reduces collision severity;
- Improved intersection capacity;
- Environmental benefits (i.e., reduced vehicle idling, vehicle noise, fuel consumption, emissions, etc.);
- Accommodates the Emergency Detour Route for Highway 402 closures.

Disadvantages of roundabouts include the following:

- require additional property beyond the current road allowance; and
- higher construction cost when compared to other intersection control options.



Existing Conditions



NTS 

Existing Traffic:

- London Line (CR 22) and Forest Road (CR 8) each carry an average of up to 2500 vehicles / day, well within the capacity of a single lane roundabout
- The vehicles include cars, trucks, farm machinery and bicycles
- Approximately 15% of the traffic is heavy trucks
- As Emergency Detour Routes (EDR) London Line and Forest Road must also accommodate peaks in traffic whenever Highway 402 is closed



Photo Inventory



Forest Road (CR 8) looking southwest towards to westbound ramp to London Road



Looking east on London Road (CR 22) towards the intersection



Forest Road Looking south towards the London Road intersection



London Road Looking east towards the Forest Road intersection

Proposed Detail Design

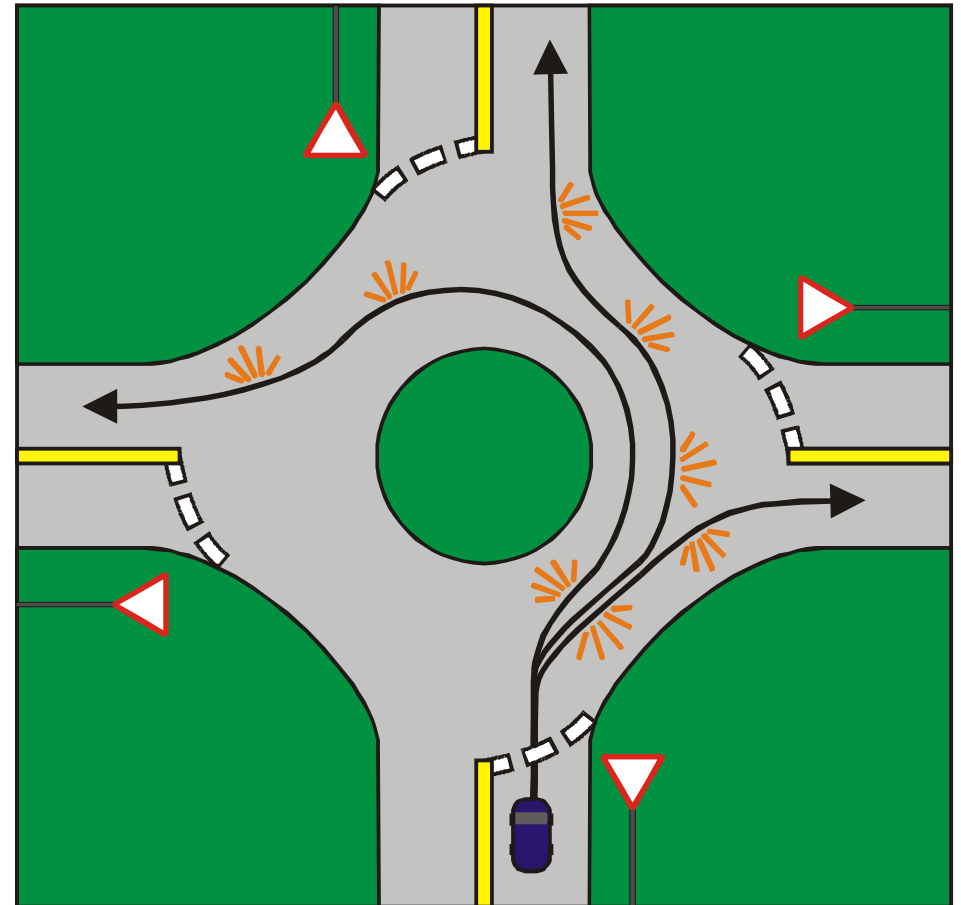


Roundabout Driving Tips

- Slow down as you approach the roundabout.
- View roundabout intersection sign to plan exit leg of roundabout.
- Watch and yield to pedestrians crossing the roadway when approaching or exiting a roundabout.
- Traffic in the roundabout has the right-of-way (treat roundabout as a one-way street).
- Do not stop within roundabout.
- Always signal your exit.

Position and Signalling within the Roundabout

1. Drivers must signal to turn right.
2. Drivers must signal to exit the roundabout.
3. Drivers must signal to change lanes and should check their rear-view mirror and blind spot.
4. When travelling past two or more exits on the roundabout drivers can use a courtesy left-hand signal.



Effects and Mitigation

Factor	Environmental Issues and Potential Effects	Preliminary Design Proposed Mitigation Measures
Traffic Operations - Delay	Potential for traffic travel delays associated with construction staging.	Provide advance notice of all closures/lane reductions/detours. Prepare/implement Traffic Management Plan during construction.
Emergency Services	Potential impact to emergency service routes/access due to closures / lane reductions.	Prepare/implement Traffic Management Plan during construction. Ensure ongoing and advance communication with emergency service providers during construction.
Property Impacts - Permanent	Property acquisition for intersection improvements.	Early communication/coordination with owner(s) and tenants to minimize disruption associated with property purchase. Compensation for lands and decommissioning of wells if required.
Aesthetics	Roundabouts provide opportunities to enhance aesthetics.	Provide a landscape plan which includes low maintenance, draught tolerant plantings.

Effects and Mitigation

Factor	Environmental Issues and Potential Effects	Preliminary Design Proposed Mitigation Measures
Archaeology	Potential damage to or loss of archaeological artifacts.	<p>If deeply buried archaeological remains are encountered during construction, construction will be stopped in the vicinity of the discovery and the Contractor must notify the Ministry of Heritage, Sport, Tourism and Culture Industries.</p> <p>Indigenous Peoples communities will be contacted during the construction phase.</p>
Noise (Construction)	Noise from construction equipment and vehicles during construction.	Maintain equipment in good operating condition to prevent unnecessary noise. Restrict idling of equipment to the minimum necessary to perform the work. Contractor will be required to abide by noise control by-laws for day-to-day operations.
Management of Excess Materials	The project will result in the generation of waste asphalt, granulars, concrete and possibly earth materials.	Excess generation will be minimized through promoting contractor salvage, recycling and re-use in the contract tender documents.
Species at Risk	Potential disruption to migratory birds, nesting and/or species at risk (SAR).	<p>Conduct site 'sweeps' prior to any tree removals and prior to and during construction.</p> <p>Clear any vegetation outside of the breeding bird season.</p> <p>Ensure Contractor's staff are trained to recognize potentially affected species and are required to notify authorities if any are encountered on site.</p>

Effects and Mitigation

Factor	Environmental Issues and Potential Effects	Preliminary Design Proposed Mitigation Measures
Utilities	Potential for impacts to existing utilities.	Ensure advance coordination with utility companies and approval for all utility relocations/protections.
Drainage	Potential for impacts to drainage.	Maintain existing quality and quantity of stormwater treatment. Ensure tile drainage systems are accommodated.

Recommended Design

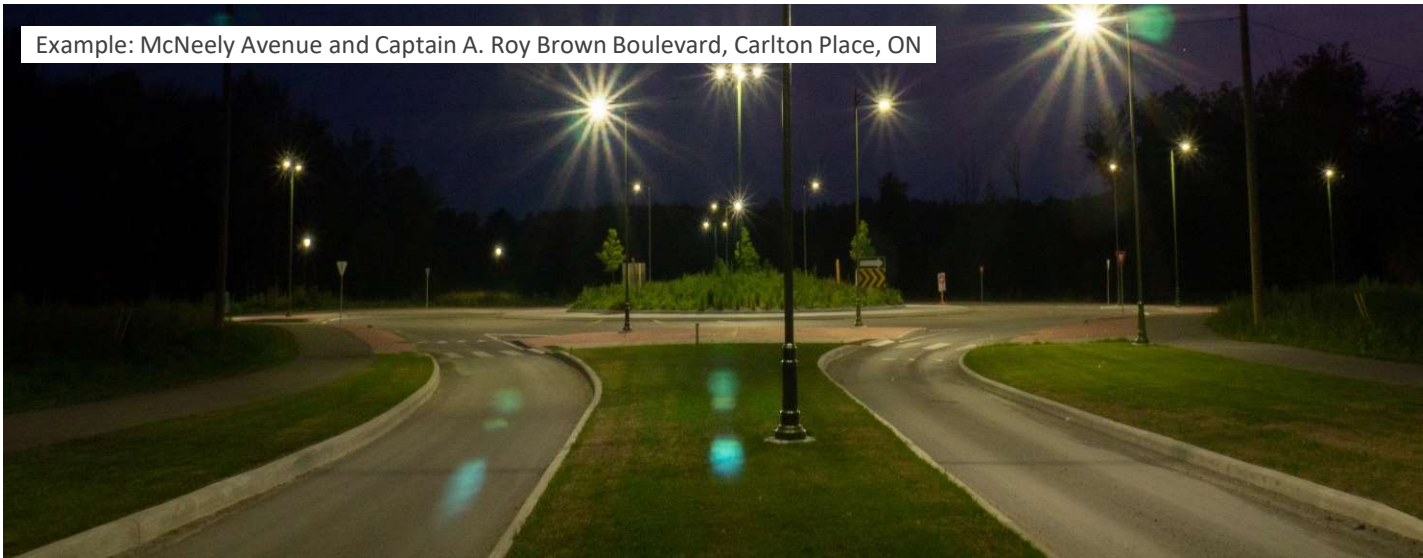


BTE 24-026
2024-11-06
NTS

Lambton Roads 8 and 22 Intersection Improvements
Preliminary Roundabout Design

BT ENGINEERING
BTE

Example: McNeely Avenue and Captain A. Roy Brown Boulevard, Carlton Place, ON



Example: County Road 28, Russell Township, ON



Design Features:

- LED lighting (during nighttime and low-light conditions) for enhanced visibility and to provide safe navigation.
- Single-lane layout provides a simple and intuitive design.
- Directional splitter islands and curb and clear signage for vehicle guidance.
- Aesthetic and prominent center island décor with low-maintenance vegetation.

Next Steps

Following this meeting:

- All PCC comments and ideas will be reviewed
- The Design will be finalized considering those comments
- The County will proceed with Property Acquisitions

How can you remain involved in the Project?

- Request that your name/e-mail be added to the mailing list
- Provide a comment
- Contact the Project Managers at any time (contact information is shown below)

Steve Taylor
Consultant Project Manager
Email: stevenj.taylor@bteng.ca
Phone: 519-672-2222
Toll Free: 1-866-218-1001

Matt Deline, P.Eng.
Manager, Public Works
County of Lambton
789 Broadway Street, Box 3000
Wyoming, ON N0N 1T0
Email: Matt.Deline@county-lambton.on.ca
Phone: 519-845-0809 ext. 5370

Thank you for your participation in this PCC. Your input into this project is valuable and appreciated. Please submit any questions or comments to the contacts listed above by **December 6, 2024.**

All information is collected in accordance with the *Municipal Freedom of Information and Protection of Privacy Act*.

Appendix C

PCC Comment Sheets



County of Lambton
County Road 22 (London Line) and County Road 8 (Forest Road)
Roundabout Intersection
Public Consultation Centre (PCC)
Monday, November 25, 2024

Thank you for attending tonight's public consultation centre. Please provide your comments on any of the material presented.

Very informative

Concern is Egremont Rd
Warwick detour if needed.
Village

(Please turn over if additional space is required.)

Please complete your comment sheet this evening and place in the comment box provided
OR send your completed comment sheet by **Wednesday, December 11, 2024** to:

Steve Taylor, P.Eng.
Consultant Project Manager
BT Engineering Inc.
Email: stevenj.taylor@bteng.ca
Phone: 519-672-6222

Matt Deline, P.Eng.
Manager, Public Works
County of Lambton
Email: Matt.Deline@county-lambton.on.ca
Phone: 519-845-0809 ext. 5370



**County of Lambton
County Road 22 (London Line) and County Road 8 (Forest Road)
Roundabout Intersection
Public Consultation Centre (PCC)
Monday, November 25, 2024**

Thank you for attending tonight's public consultation centre. Please provide your comments on any of the material presented.

My BIGGEST CONCERN IS THE EXTENDED CLOSURE
OF THE ROADS. IT WON'T AFFECT US MUCH, BUT WE
HAVE SEVERAL NEIGHBOURS WITH FARMS ON ALL SIDES OF
THE INTERSECTION. THAT WILL BE SERIOUSLY INCONVENIENCED
BY THE CLOSURE.
PLEASE DO WHATEVER YOU CAN TO KEEP SOME ACCESS.

(Please turn over if additional space is required.)

Please complete your comment sheet this evening and place in the comment box provided
OR send your completed comment sheet by **Wednesday, December 11, 2024** to:

Steve Taylor, P.Eng.
Consultant Project Manager
BT Engineering Inc.
Email: stevenj.taylor@bteng.ca
Phone: 519-672-6222

Matt Deline, P.Eng.
Manager, Public Works
County of Lambton
Email: Matt.Deline@county-lambton.on.ca
Phone: 519-845-0809 ext. 5370



County of Lambton
County Road 22 (London Line) and County Road 8 (Forest Road)
Roundabout Intersection
Public Consultation Centre (PCC)
Monday, November 25, 2024

Thank you for attending tonight's public consultation centre. Please provide your comments on any of the material presented.

A round-a-bout is not the answer for every intersection. I feel that they should try stop lights. Even with stop lights it is not an answer, but it could possibly be better than what is there.

(Please turn over if additional space is required.)

Please complete your comment sheet this evening and place in the comment box provided OR send your completed comment sheet by **Wednesday, December 11, 2024** to:

Steve Taylor, P.Eng.
Consultant Project Manager
BT Engineering Inc.
Email: stevenj.taylor@bteng.ca
Phone: 519-672-6222

Matt Deline, P.Eng.
Manager, Public Works
County of Lambton
Email: Matt.Deline@county-lambton.on.ca
Phone: 519-845-0809 ext. 5370



County of Lambton
County Road 22 (London Line) and County Road 8 (Forest Road)
Roundabout Intersection
Public Consultation Centre (PCC)
Monday, November 25, 2024

Thank you for attending tonight's public consultation centre. Please provide your comments on any of the material presented.

① Add to contract list
(prefer land mail)

② would like to keep the parking lot

(Please turn over if additional space is required.)

Please complete your comment sheet this evening and place in the comment box provided OR send your completed comment sheet by **Wednesday, December 11, 2024** to:

Steve Taylor, P.Eng.
Consultant Project Manager
BT Engineering Inc.
Email: stevenj.taylor@bteng.ca
Phone: 519-672-6222

Matt Deline, P.Eng.
Manager, Public Works
County of Lambton
Email: Matt.Deline@county-lambton.on.ca
Phone: 519-845-0809 ext. 5370



County of Lambton
County Road 22 (London Line) and County Road 8 (Forest Road)
Roundabout Intersection
Public Consultation Centre (PCC)
Monday, November 25, 2024

Thank you for attending tonight's public consultation centre. Please provide your comments on any of the material presented.

Remove old concrete road
alignment

Help to control vegetation.

↓ Sight Lines.

(Please turn over if additional space is required.)

Please complete your comment sheet this evening and place in the comment box provided
OR send your completed comment sheet by **Wednesday, December 11, 2024** to:

Steve Taylor, P.Eng.
Consultant Project Manager
BT Engineering Inc.
Email: stevenj.taylor@bteng.ca
Phone: 519-672-6222

Matt Deline, P.Eng.
Manager, Public Works
County of Lambton
Email: Matt.Deline@county-lambton.on.ca
Phone: 519-845-0809 ext. 5370



County of Lambton
County Road 22 (London Line) and County Road 8 (Forest Road)
Roundabout Intersection
Public Consultation Centre (PCC)
Monday, November 25, 2024

Thank you for attending tonight's public consultation centre. Please provide your comments on any of the material presented.

I hope that there remains access through the intersection ~~from~~ from east to west for the many locals that have farms on both sides that need to be accessed in a reasonable amount of time.

(Please turn over if additional space is required.)

Please complete your comment sheet this evening and place in the comment box provided
OR send your completed comment sheet by **Wednesday, December 11, 2024** to:

Steve Taylor, P.Eng.
Consultant Project Manager
BT Engineering Inc.
Email: stevenj.taylor@bteng.ca
Phone: 519-672-6222

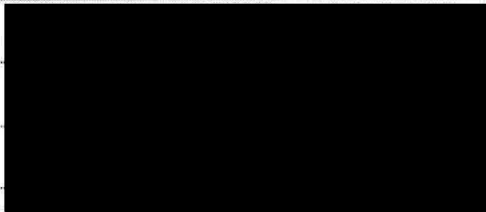
Matt Deline, P.Eng.
Manager, Public Works
County of Lambton
Email: Matt.Deline@county-lambton.on.ca
Phone: 519-845-0809 ext. 5370



County of Lambton
County Road 22 (London Line) and County Road 8 (Forest Road)
Roundabout Intersection
Public Consultation Centre (PCC)
Monday, November 25, 2024

Thank you for attending tonight's public consultation centre. Please provide your comments on any of the material presented.

Our brother [REDACTED] was killed at this corner [REDACTED]. We would like to know about where the memorial that we have placed there. ~~That~~ will be moved to. Thanks.



(Please turn over if additional space is required.)

Please complete your comment sheet this evening and place in the comment box provided OR send your completed comment sheet by **Wednesday, December 11, 2024** to:

Steve Taylor, P.Eng.
Consultant Project Manager
BT Engineering Inc.
Email: stevenj.taylor@bteng.ca
Phone: 519-672-6222

Matt Deline, P.Eng.
Manager, Public Works
County of Lambton
Email: Matt.Deline@county-lambton.on.ca
Phone: 519-845-0809 ext. 5370



County of Lambton
County Road 22 (London Line) and County Road 8 (Forest Road)
Roundabout Intersection
Public Consultation Centre (PCC)
Monday, November 25, 2024

Thank you for attending tonight's public consultation centre. Please provide your comments on any of the material presented.

As a person that lives on the east side and works to the west. I want to ensure I have access through as long as I can and that local side roads are repaired + open to limit the extra travel needed. ie Kingscourt. Also can we do something to clean up or remove the old section of road.

(Please turn over if additional space is required.)

Please complete your comment sheet this evening and place in the comment box provided OR send your completed comment sheet by **Wednesday, December 11, 2024** to:

Steve Taylor, P.Eng.
Consultant Project Manager
BT Engineering Inc.
Email: stevenj.taylor@bteng.ca
Phone: 519-672-6222

Matt Deline, P.Eng.
Manager, Public Works
County of Lambton
Email: Matt.Deline@county-lambton.on.ca
Phone: 519-845-0809 ext. 5370

Completed Date	Reference Number	Please provide your comments on any of the material presented.
12/3/2024 12:33	2024-12-03-001	Don't need another roundabout on London line and forest Line. We already have a roundabout on Nauvoo Road.
12/3/2024 13:48	2024-12-03-002	<p>Statistics show that roundabouts provide approximately a 90 percent reduction in fatal crashes and a 76 percent reduction in injury crashes. I support the proposed roundabout, provided that the engineering design ensures the safe passage of fifth-wheel vehicles and farm machinery.</p> <p>I initiated and presented a petition to the County of Lambton in 2021 to advocate for improvements at Forest Rd. and London Line. I appreciate the swift action the County took to address the request at that time and for continued monitoring of Lambton County intersections with high accident rates.</p> <p>This intersection holds significant personal meaning to me, as it was the site where my stepfather was tragically killed. Our family honours his memory with a roadside memorial at this location. Since the new design will remove this memorial, I respectfully request that the County consider installing a sign, monument, or memorial garden in remembrance of Bob Hollingsworth and Brenda Rogers, who were both killed at this location. Both were residents of Lambton County and the Township of Warwick, which shares jurisdiction over the roundabout location. A memorial would bring comfort to our families, knowing that their memory lives on in this meaningful way.</p>